

Q&A



01 Why a Town Square now?
A proposed mixed-use office building on the Historic Post Office site provides the opportunity to create a public space on Lot E. The owner has offered to contribute funds for the creation of a Town Square.

02 What will happen with the Historic Post Office?
The lobby and Park Road elements of the historic Post Office will be preserved and integrated in the project. A restaurant and outdoor terrace are planned for the historic lobby area.

03 What happens to the existing parking on Lot E?
The new office building includes a parking garage that will be open to the public on weeknights and weekends. The City has also built a new municipal parking garage close by on Lorton Avenue.

04 Will the alley on the rear side of the buildings along Burlingame Avenue remain?
The Town Square plans incorporate the alley into the Grove design concept and the adjacent businesses can incorporate outdoor seating.

05 Who will pay for the construction and maintenance of the Town Square?
The office developer is contributing \$2 million toward the construction Square and the City will provide the additional funds. There may be an opportunity for some private contributions as well.

06 What is the construction timeline?
The detailed planning for the Square will start next year and coordinate with the construction of the office building.



Proposed Town Square - View from Park Road



View from Park Road today



Envision Burlingame Town Square A Welcoming New Public Space in the Heart of Burlingame

For more information, please visit:

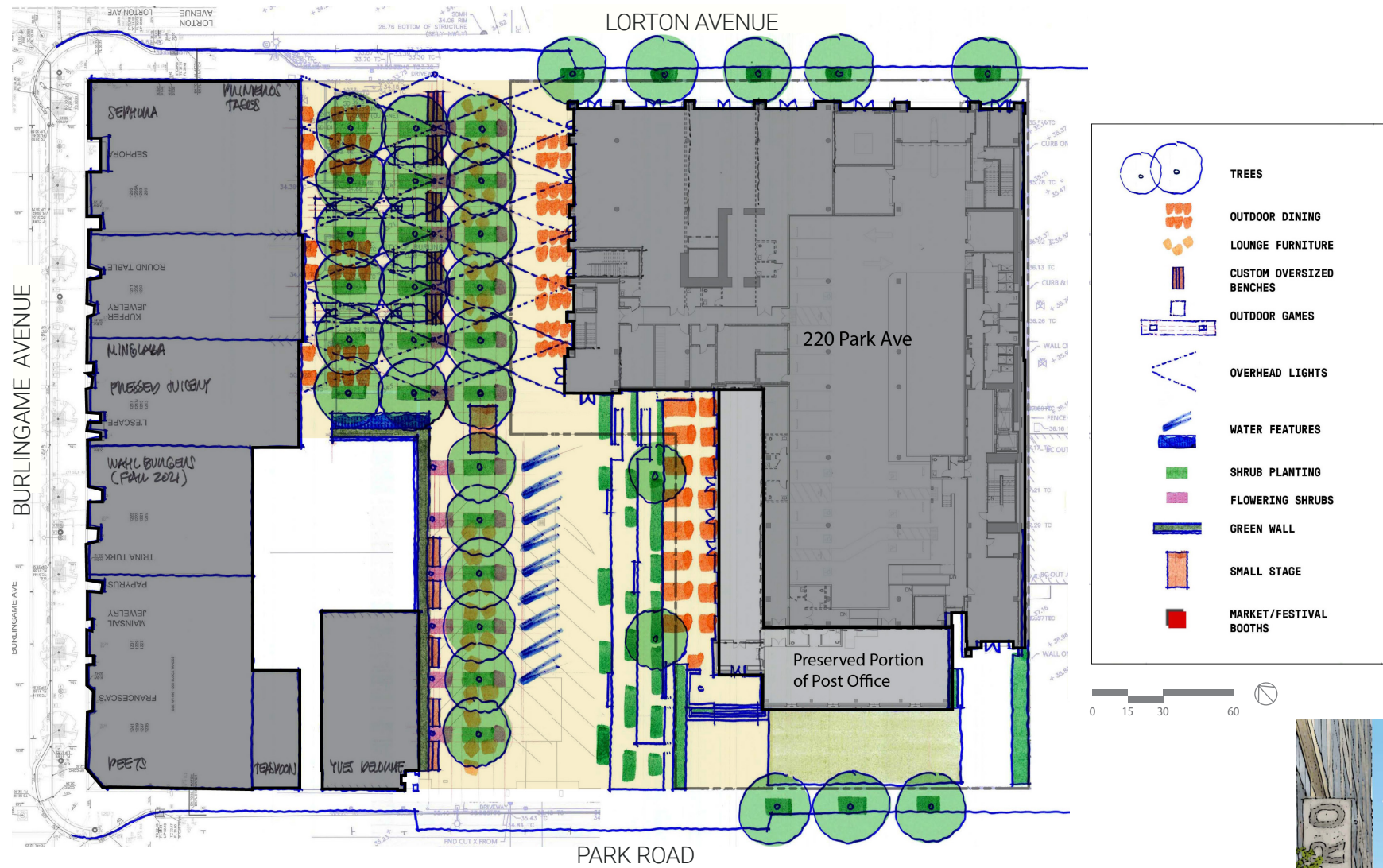
WWW.BURLINGAME.MYSOCIALPINPOINT.COM/TOWNSQUARE

Questions? Please contact us at: TownSquare@Burlingame.org



In 2020, the City of Burlingame invited residents, business owners, and visitors to envision a new Town Square on Lot E next to the historic Post Office located between Park Road and Lorton Avenue near Burlingame Avenue. The selected concept design showcased here will get built over the next few years.





Main Town Square Elements



Grove of Trees



Seating Elements



Outdoor Dining



Terrace at Post Office



Water Feature



Small Stage

Design Concept "The Grove"

The selected concept design for the Town Square is based on input that was provided by the community as well as the City Council Subcommittee in several virtual meetings, online surveys, and a project website. The Town Square design aims to create a welcoming place that has a unique "Burlingame" character. It features two major elements: a grove of trees with custom benches and room for play on the Lorton Avenue side, and a terrace with seating steps in front of the Historic Post Office with an open space that can accommodate events including the

Farmers' Market. The Town Square will also have a water feature, public art, a small stage, public rest rooms, and a combined trash enclosure for the buildings along Burlingame Avenue. The Town Square is framed by a new office building with ground floor shops and restaurants. The edges along the Town Square are designed to accommodate outdoor dining and seating. The Town Square complements the vibrant downtown Burlingame Avenue and provides a new place to meet, relax, eat, drink, and enjoy events.



Proposed Town Square - View from Lorton Avenue